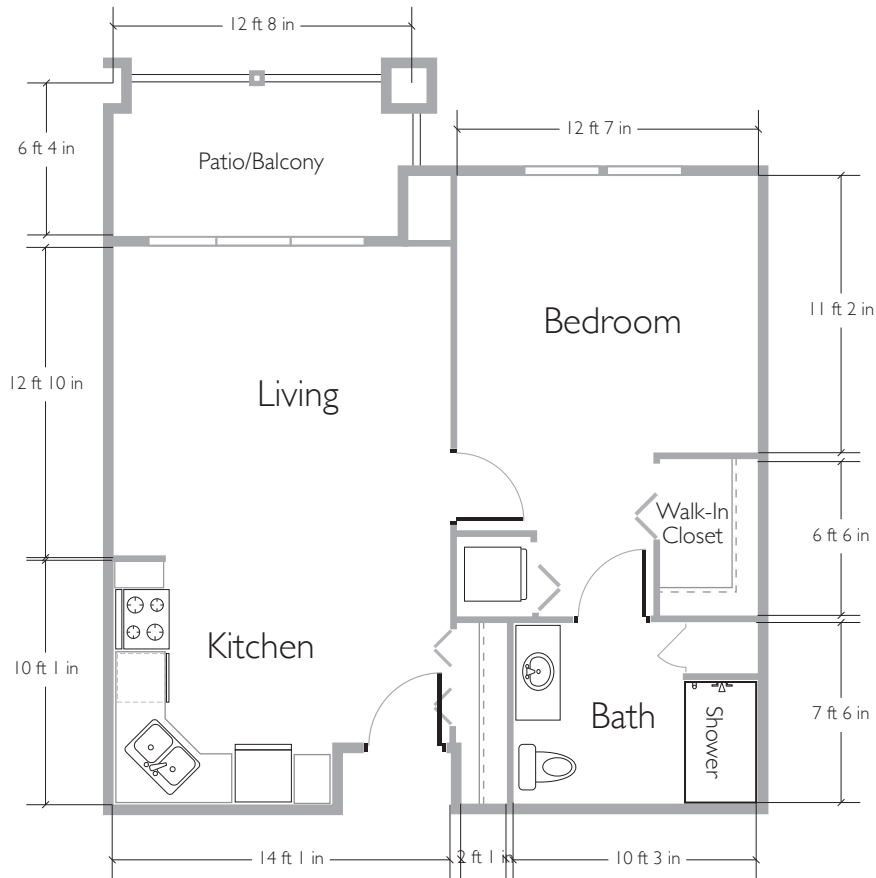


PARK PLACE OF ST. JOHN

A PROVIDENCE LIFE SERVICES COMMUNITY



CEDARWOOD

| Bedroom | | Bathroom | Patio/Balcony | 689 Square Feet

150324



PARK PLACE
of St. John

phone (219) 525-4658
email PPSJ@provlife.com

www.ParkPlaceStJohn.com



Park Place of St. John does not discriminate on the basis of race, color, religion, national origin, sex, or handicap.
Park Place of St. John is a Christian 501(c)(3) not-for-profit organization.

