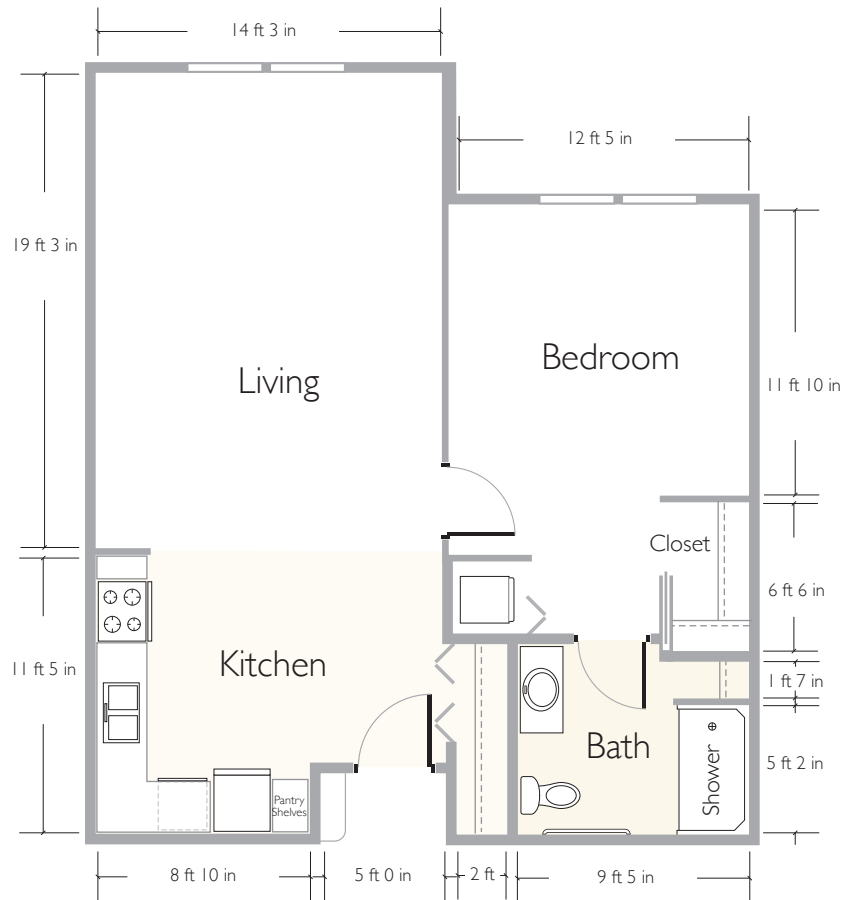


PARK PLACE OF ST. JOHN
 A PROVIDENCE LIFE SERVICES COMMUNITY



ACTUAL DIMENSIONS/FLOOR PLANS MAY VARY

BIRCHWOOD

| Bedroom | | Bathroom | 815 Square Feet | \$3,135

PHASE 2

180115



PARK PLACE
 of St. John

phone (219) 525-4658
 email PPSJ@provlife.com

www.ParkPlaceStJohn.com



Park Place of St. John does not discriminate on the basis of race, color, religion, national origin, sex, or handicap. Park Place of St. John is a 501(c)(3) not-for-profit organization.

